

C.I.P.

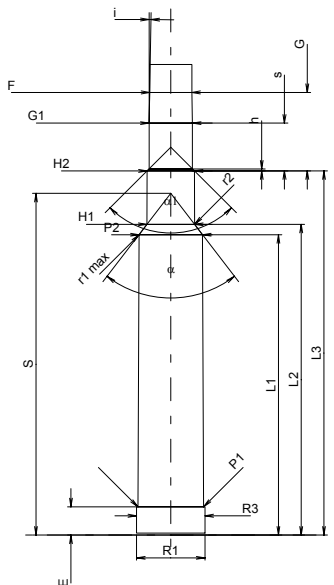
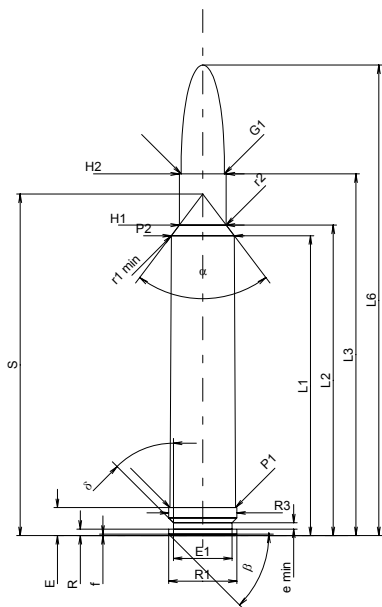
340 Weath. Mag.

Country of Origin: US

TAB. III

Date 84-06-14

Revision 02-05-15



Scale 1:1.5

Dimensions in << mm >>
Dimensions and Tolerances for Proof Barrels
see Appendix CR 1.

CARTRIDGE MAXI

Lengths

L1	=	59.49
L2	=	61.60
L3 ¹⁾	=	71.76
L4	=	
L5	=	
L6	=	93.35

Case Head

R	=	1.30
R1	=	13.50
R3	=	13.50
E ¹⁾	=	5.56
E1	=	11.61
e min	=	1.24
delta	=	45°
f	=	0.30
beta	=	45°

Powder Chamber

P1	=	13.00
P2 *	=	12.49

Junction Cone

alpha *	=	74°06'26"
S *	=	67.76
r1 min	=	3.30
r2	=	4.62

Collar

H1 *	=	9.30
H2 ¹⁾	=	9.30

Projectile

G1 ¹⁾	=	8.59
G2	=	
F	=	
L3+G ¹⁾	=	87.33

Pressures (Energies)

Method Transducer

Pmax	=	4400 bar
PK	=	5060 bar
PE	=	5500 bar
M	=	25.00
EE	=	6825 Joule

Miscellaneous Dimensions

Fe ¹⁾	=	0.10
delta L	=	

CHAMBER MINI

Lengths

L1	=	59.59
L2	=	61.65
L3 ¹⁾	=	72.24

Breech

R	=	
R1	=	13.56
R2	=	
R3	=	13.56
r	=	

Powder Chamber

E ¹⁾	=	5.59
P1 ¹⁾	=	13.06
P2 *	=	12.59

Junction Cone

alpha *	=	75°04'26"
S *	=	67.79
r1 max	=	3.05
r2	=	4.62

Collar

H1 *	=	9.43
H2 ¹⁾	=	9.37

Commencement of Rifling

G1 ¹⁾ *	=	8.60
G ¹⁾	=	15.57
alpha 1 *	=	90°
h	=	0.39
s	=	9.47
i ¹⁾ *	=	1°01'59"
w	=	

Barrel

F ¹⁾ *	=	8.38
Z ¹⁾	=	8.59

Grooves

b	=	3.20
N	=	6
u	=	254.00
Q	=	57.22 mm ²

Notes: 1) Check for safety reasons
* Basic dimensions